

Bluetooth Smart Lock

Installation Manual



radefy

Table of Content

1. Product Introduction	1
2. Safety Assistant Function	1
3. Product Parameters	2
4. Installation Instruction	3
5. Attachment Bluetooth Lock Installation Schematic.....	7

1. Product Introduction

This Bluetooth smart lock is a new type of intelligent door lock independently developed by our company. Currently, the RADEFY App can be download and applied in 159 countries and regions. Advanced electronic technology enables the Bluetooth Smart lock to have intelligent recognition capabilities, making access management of your rental easier and more convenient.

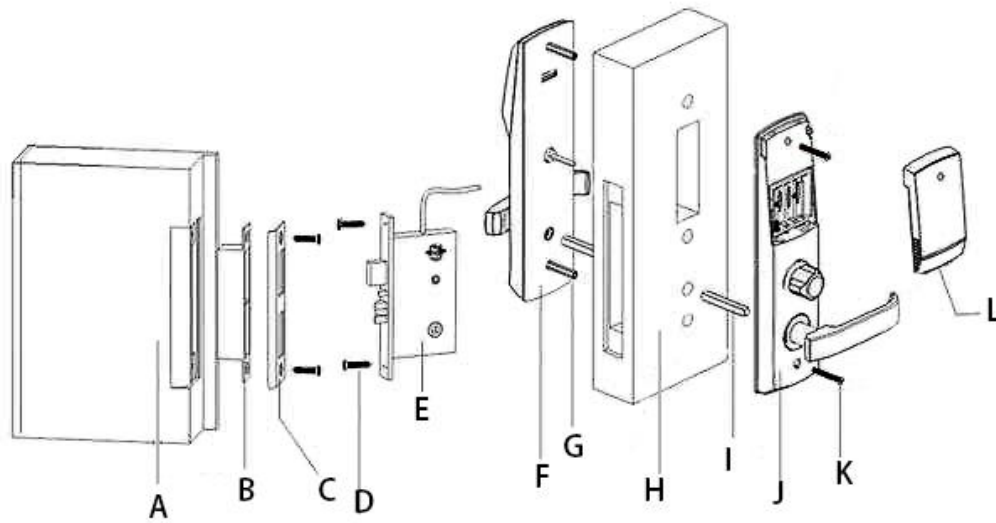
All our Bluetooth Smart lock models, are ideal for Hotels, Hostels, BnB Rentals, Student dormitories, commercial office rentals and homes.

Please read this manual carefully before using our Bluetooth Smart Lock product.

2. Safety Assistant Function

1	Passage Mode	when you need to open/close the doors frequently
2	Low Battery Alarm	when the voltage is lower than 4.8V, the alarm is activated each time with the unlock, and the lock could be unlocked 200 times after the first alarm
3	Scramble Code Function	It supports front and back dummy passwords to prevent from peeking
4	Access Records Query	You can check access records at any time from your Centurion Dashboard
5	USB Emergency Interface	You can charge the lock to unlock the door when the battery runs out.

3. Product Parameters



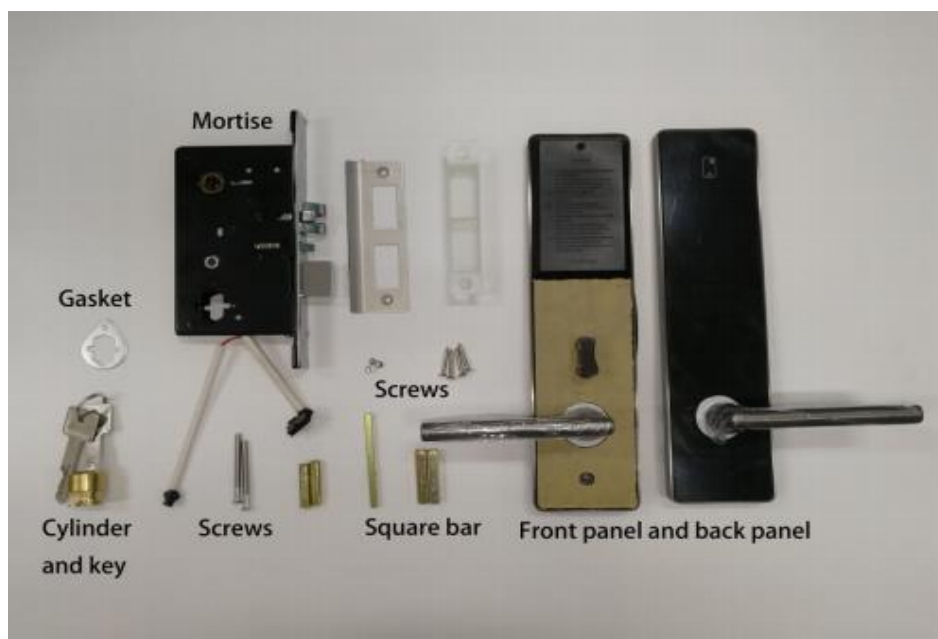
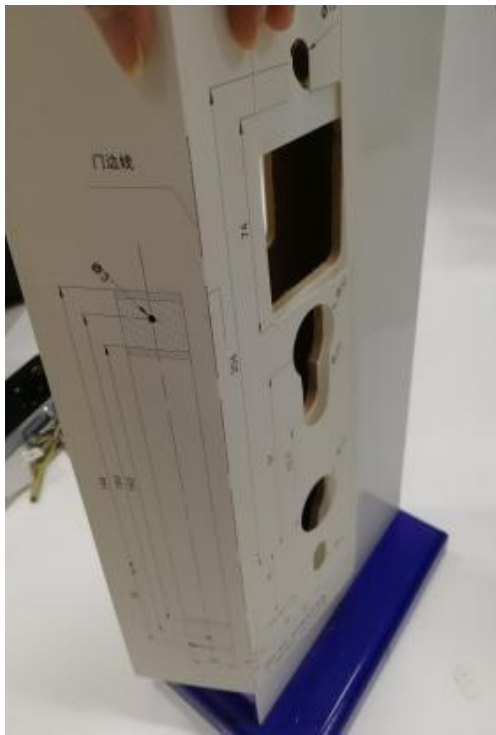
- A. Door frame
- B. Door box
- C. Baffle
- D. ST4.2*22 Screws
- E. Mortise
- F. Front panel

- G. Connect screws
- H. Door
- I. Square bar
- J. Back panel
- K. Screws
- L. Battery cover

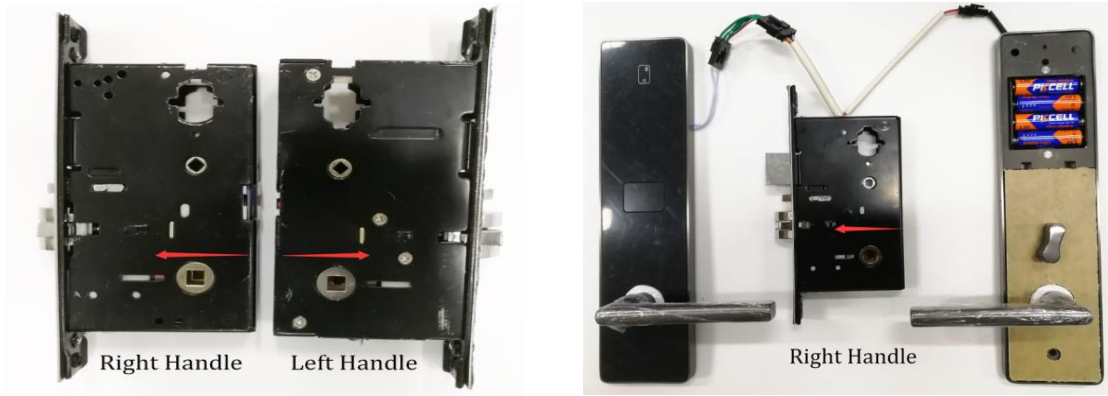
Unlock Mode	Access Code: Unlimited
	Bluetooth: Unlock by RADEFY Guest App
Emergency Power	USB external power supply
Power Supply	4 AA batteries
Work Temperature	-40~70°C
Button Type	Capacitive touch button
Door Thickness	35~55mm

4. Installation Instruction

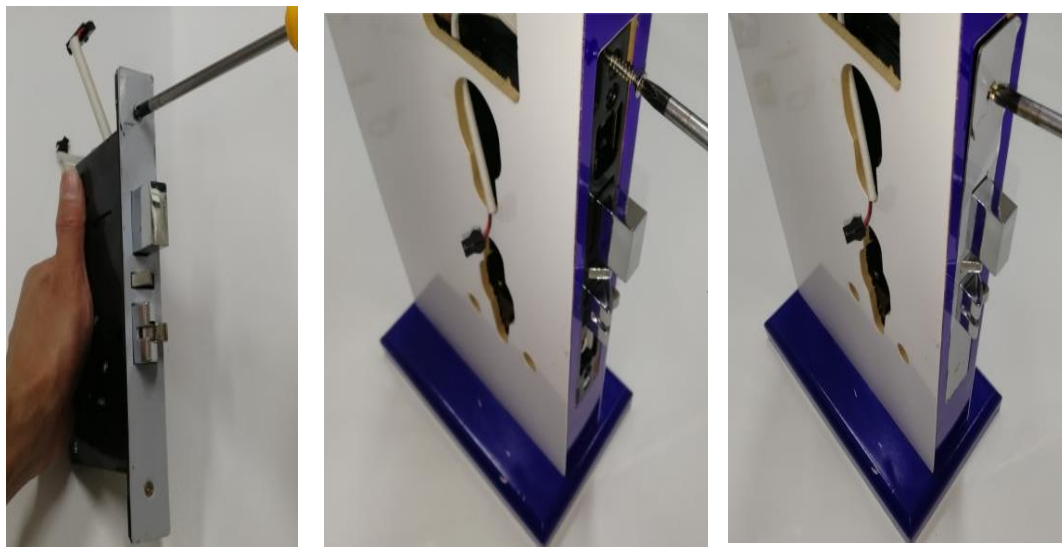
- A. Drill hole according to the template. And please make sure the following accessories are complete while opening box



B. Make sure the arrow point the latch. If not please rotate it after get into power.



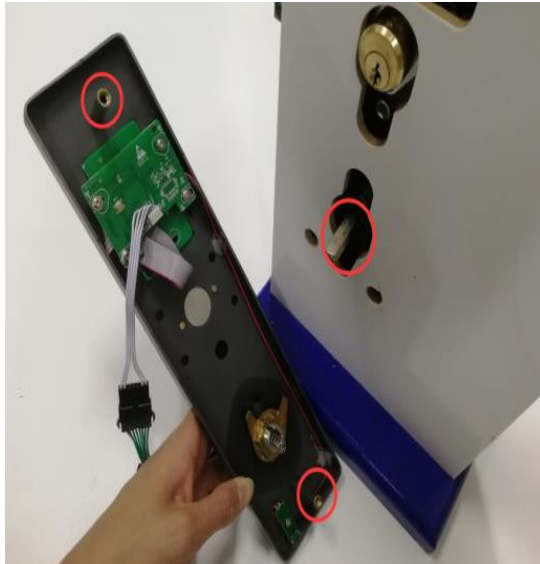
C. Remove the baffle, and install mortise on the door, then get the baffle back.



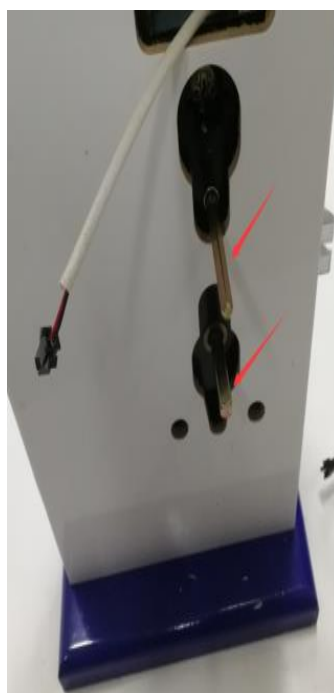
D. Fix the cylinder on the mortise.



E. Fix the connection screws and square bar. Then connect the wires before you install the front panel.



F. Remove the battery cover and connect the wires. Then insert the square bar to the corresponding position. When the lock get into power, a beeps and motor runs shows that works normally. Then install back panel.



6. Test if the lock work's normally, and tear off the protection film of the lock panel.



5. Attachment: Bluetooth Lock Installation Schematic

